

Bring out the best in everyone



Get certified
as a PCM
Trainer



The tool to make a daily difference

Professionalize your passion, set positivity in motion

As a trainer, you have the knowledge that effective communication can ignite change for the better. How about a tool to transform your knowledge into everyday actions that set positivity in motion? With the PCM trainer certification, you expand your toolbox to help clients make a daily difference. Whether you are an experienced in-company counselor, independent, or new, being a certified PCM trainer lets you connect to the best in yourself and everyone — anywhere.

Join forces with over 4,000 professional decoders

The Process Communication Model® — PCM for short — is the brainchild of American clinical psychologist Taibi Kahler, PhD. As a researcher of transactional analysis, Dr. Kahler uncovered six personality types within everyone: Thinker, Persister, Rebel, Promoter, Harmonizer, and Imaginer. Decoding these types lets us predict our own and others' behaviors, prevent disengagement or distrust, and boost changes for the better. Today PCM is practiced in 54 countries by leading organizations, such as Pixar, L'Oréal, IKEA, and BMW, as well as in diverse fields, such as leadership, education and healthcare.



Benefits that are boundless

In joining the global community of PCM professionals, you can expect to:

Add a power tool to your kit

Once certified, you can offer clients PCM seminars, custom-made programs, products, and valuable one-of-a-kind services, such as interpreting the PCM profile.

Make decoding human behavior second nature

By internalizing PCM theory and skills, everything you need to understand individual and group dynamics is always at your fingertips.

Reboot favorite approaches

Everything you learn as a PCM trainer can be applied to improve or boost models you already love and use.

Master resistance in real time

Training many kinds of clients in PCM, you discover how to overcome differences and resistances yet still engage everyone.

Make a daily difference

The more people you train in PCM, the more you contribute to an everyday world with fewer misunderstandings and better relationships.

As a certified PCM trainer, you receive:

- Ready-to-use training materials
- Ready-to-share in-depth personality profiles
- Access to new products and innovations
- Membership in a supportive professional community

What you learn

Ready to internalize the strength of PCM? This certification program is built on three learning cornerstones:

Skills to really see and really know

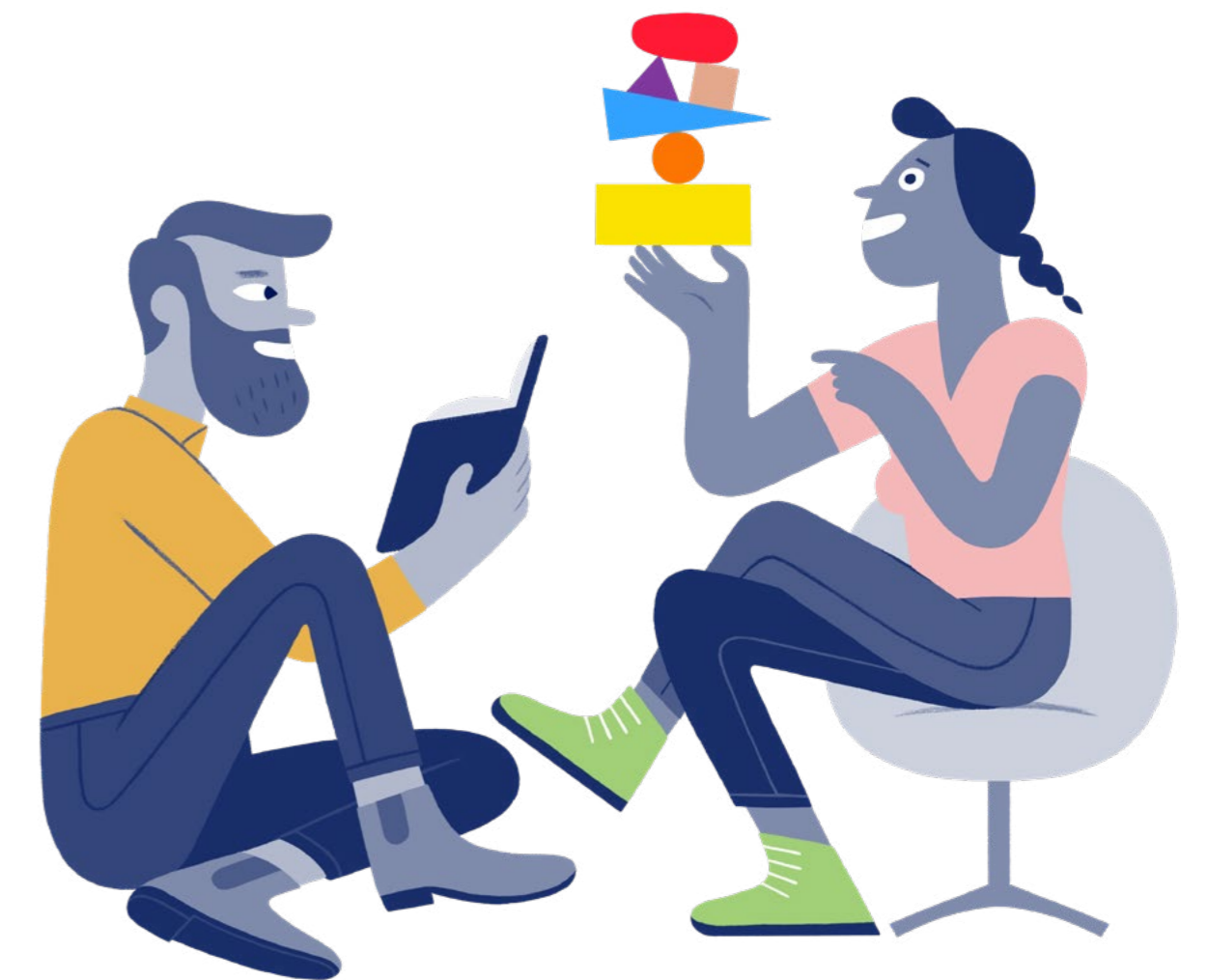
Imagine so sharply observing communication styles and behaviors that you instantly recognize people's stress signals and can chart interactions to take a positive course. You apply these skills when training clients, one on one or in groups, across all fields.

Knowledge to problem-solve and problem-prevent

Through certification, you can count on becoming a PCM theory and skills expert equipped with plenty of real-life examples to swiftly translate knowledge into solutions. While helping clients troubleshoot problems, you also train them to identify patterns and short-circuit failures for themselves.

Positive behaviors, productive practices

By achieving supreme self-awareness as a PCM trainer, you adapt your behaviors to connect to the best in everyone. These positive interactions provide a model that clients apply to their own relationships at work, at home, or out in the world.



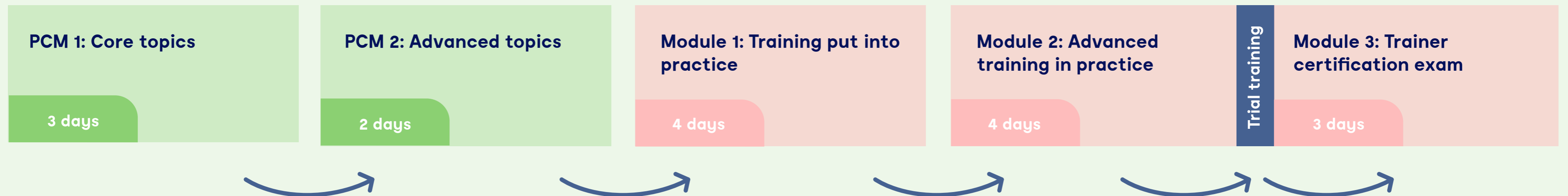
The PCM Training journey

Everything starts with the PCM profile. Armed with these deep insights into your personality, you are ready to become a PCM trainer. Start your journey by learning the PCM fundamentals in PCM 1 and PCM 2. Once you have completed them, you move onto the PCM certification for trainers. Parallel to teaching theory, this program enables you to tackle real cases and waste no time in applying effective interventions.



The PCM Fundamentals

The PCM Trainer certification track



The PCM Fundamentals

The PCM fundamentals are to be completed before starting the PCM trainer certification.
Check the calendar for upcoming seminars.

PCM 1: Core topics

- Discover every corner of your PCM profile
- Nail down the fundamentals of communication
- Identify and sustain motivations
- Learn how to adapt behaviors for better relationships

3 days

PCM 2: Advanced topics

- Hone skills in motivation identification and conflict management
- Recognize and disarm distress patterns
- Tackle real-life cases and apply effective interventions
- Put everything learned in PCM 1 into practice

2 days



The PCM Trainer certification track

Module 1: Training put into practice

- › Test your knowledge in a theory exam
- › Put theory into practice in a training setting
- › Solidify skills in effective communication and motivation identification
- › Practice intervention skills to prevent miscommunication

4 days

Module 2: Advanced training in practice

- › Deepen your knowledge about conflict management
- › Sharpen skills in motivation identification
- › Try out your ability to teach a PCM 1 topic in a mock exam
- › Receive personalized feedback with immediate applicability

4 days

Your PCM trial training

In your own setting with a maximum of 10 participants.

Module 3: Trainer certification exam

- › Teach a PCM 1 topic in a training setting
- › Show thorough understanding of theory
- › Model capacity to manage your own distress patterns
- › Command ability to apply effective interventions
- › Complete final certification exam and **get certified!**

3 days

Requirements

- To participate in the program, you are required to have completed the PCM Fundamentals and have experience in working with groups.
- Once you register for the certification program, we will invite you for an intake. In about an hour, we get to know each other and match goals and expectations.

Practicals

- The certification program standardly takes six months to complete. It requires about 12 days of preparation, peer review, and study time.
- The PCM training certification costs €5,790 + VAT. This price covers the three certification modules, processing and certification fees, materials, and any in-house catering.
- Prefer to do the program in person or online? You decide which format works better for you.

Your trainers

Your certification journey is led by:
Patricia Antersijn - PCM Master trainer
Edith Doosje - PCM Master trainer



Are you ready to get certified?

Check the calendar for the PCM Fundamentals to get started.

Or send us an email to enroll for the PCM Trainer certification track and we'll invite you for an intake.

PCM Nederland & België
Bos en Lommerplantsoen 1A
1055 AA Amsterdam
info@pcm nederland.nl

For more information on the workings of PCM, please visit our website.

www.processcommunicationmodel.com



The tool to make a daily difference

